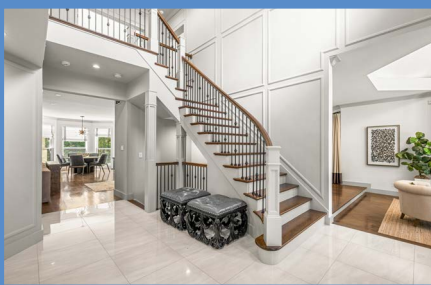


*Hubble
Bisbee*

CHRISTIE'S
INTERNATIONAL REAL ESTATE



HELMSLEY COURT
18 HAMBLETON COURT



LOCATIONS

2330 W Joppa Road, Suite 104
Lutherville, MD 21093

181 Harry S Truman Pkwy Ste 200
Annapolis, MD 21401



KEISHA MCCLAIN

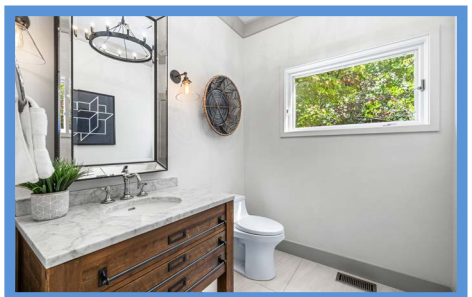
Realtor®

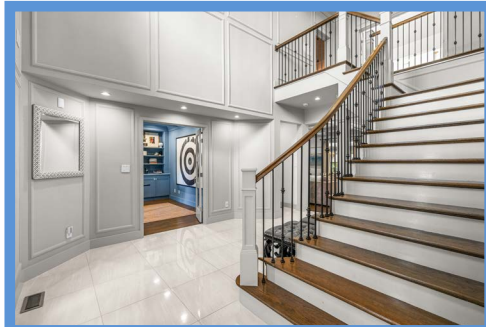
KeishaMcClain@HubbleBisbee.com

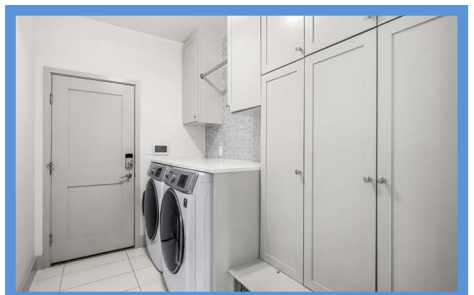
443-414-2168 (Mobile)

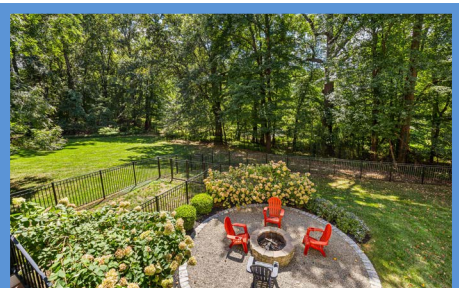
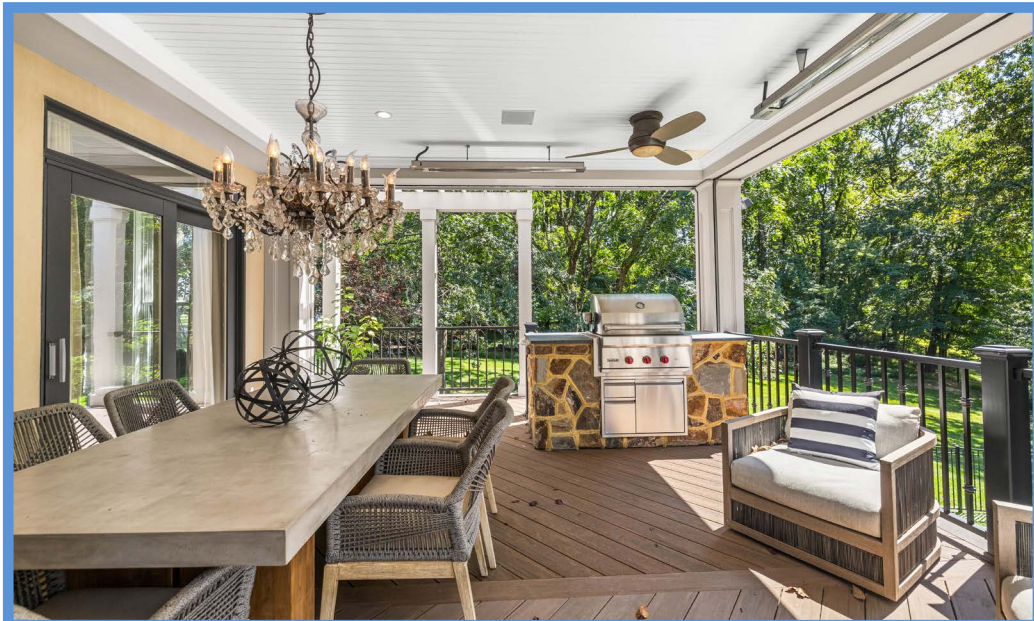
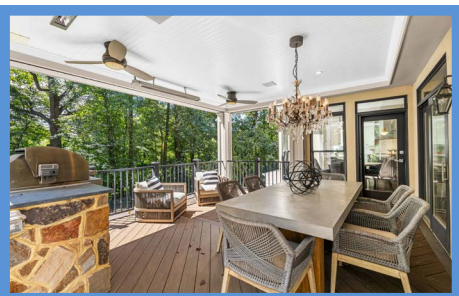
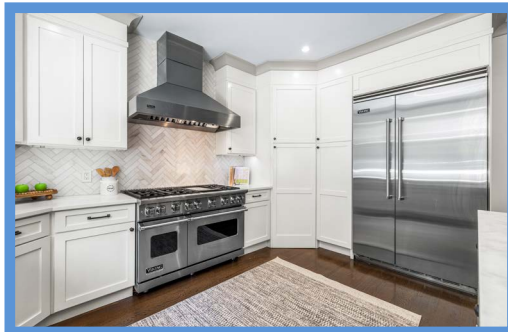
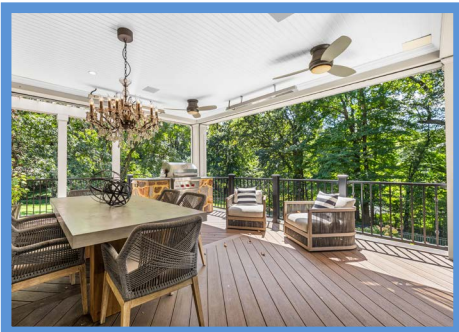
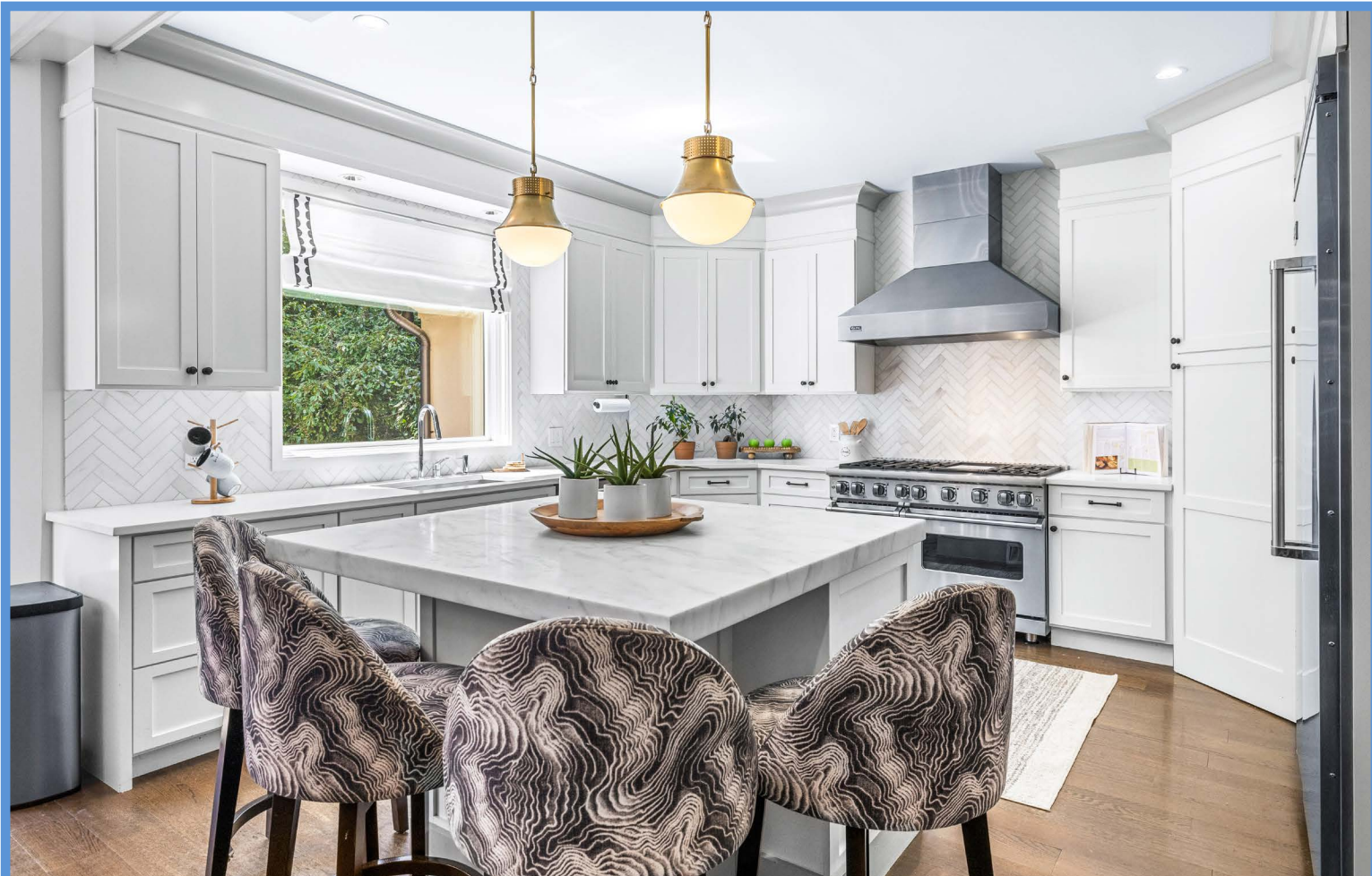
410-321-1411 (Office)

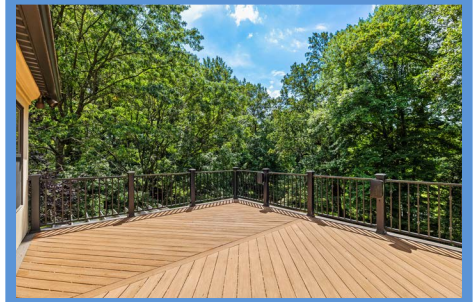
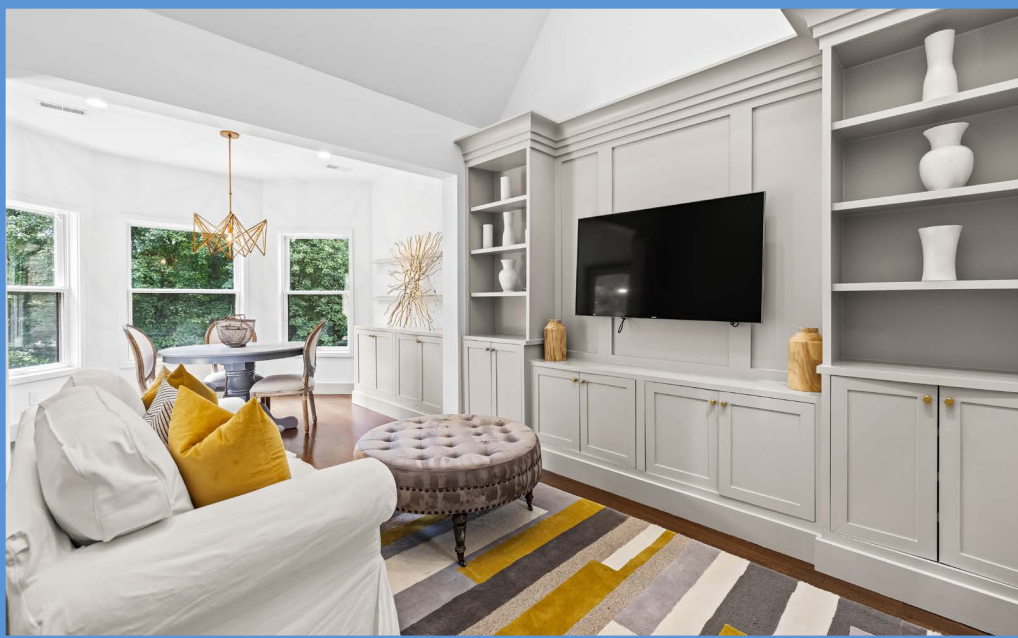
WWW.HUBBLEBISBEE.COM | (410) 321-1411 (OFFICE) | 











FOYER 17'7" X 13'8"

- Paneled natural wood entry door with shuttered peep door and sidelights with textured glass
- Two-story with vaulted ceiling
- Porcelain tile floor
- Open oak staircase with hardwood handrails, metal spindles and painted risers and newel posts
- Matching open oak staircase to Lower Level
- Wall panel moldings
- Arched window above entry door with barrel-vault dormer with half-round window above
- Large hanging lantern
- Recessed lighting
- Passage to Powder Room with double closet
- French doors to Office
- Flows to Kitchen
- Step-down access to Living Room

LIVING ROOM 15'1" X 13'11"

- Vaulted octagonal ceiling
- Chevron pattern hardwood flooring
- Full-height porcelain tiled chimney wall with gas (?) fireplace
- Full-width bay window with 3 arched windows, plantation shutters and custom drapery treatments

- Crown molding
- Modern brass chandelier
- Built-in ceiling speakers
- Open flow with full-width step-up to Dining Room

DINING ROOM 15'11" X 14'0"

- Hardwood flooring
- Walk-in bay window with French doors to walled garden and custom drapery treatment
- Crown molding
- Modern brass/wood bead chandelier
- Recessed lighting
- Access to Kitchen

OFFICE 15'9" X 14'6"

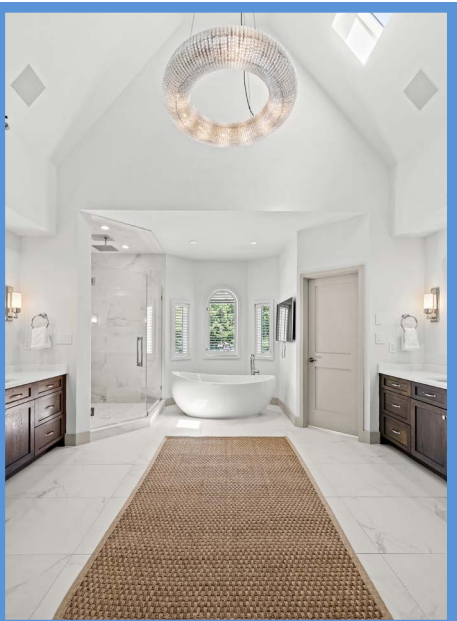
- French doors from Foyer
- Coffered ceiling trimmed with crown molding
- Hardwood flooring
- Two sets of architectural built-in bookcase with base cabinets flanking feature wall with chair rail and wall panel moldings
- Two windows with custom drapery treatment
- Built-up crown molding
- Recessed lighting

FAMILY ROOM 18'4" X 16'2"

- Coffered ceiling trimmed with crown molding
- Hardwood flooring
- White rustic stone tiled chimney with gas fireplace, quartz mantel shelf and Samsung wall mounted TV
- Two sets of French doors to covered porch with transoms and custom drapery treatments
- Two windows flanking fireplace with custom Roman shades
- Recessed lighting
- Built-in surround sound speakers
- Open flow to Kitchen

KITCHEN 29'6" X 26'8"

- Hardwood flooring
- Saker style white soft-close cabinets including island/breakfast bar, walk-in pantry cabinet, additional pantry cabinet, roll-out trays, pot-pan drawers, tray cabinets, pull-out trash/recycle bins and dovetailed drawers
- Quartz counters with marble counter on island
- Chevron pattern marble backsplashes
- Viking stainless steel built-in refrigerator



- Viking stainless steel commercial grade 6-burner gas range with 2 ovens and griddle
- Viking stainless steel range hood to ceiling
- Viking stainless steel built-in microwave
- U-Line 2-door wine cooler
- Viking stainless steel dishwasher
- Oversize stainless steel undermount sink with Insinkerator disposal
- Large breakfast area in bay window with custom Roman shades, glazed door with transom to covered porch and modern chandelier
- Picture window at sink with custom Roman shade
- Crown molding
- Two modern pendant lights above island
- Recessed lighting
- Under-cabinet lighting
- Access to Laundry Room

POWDER ROOM 7'1" X 6'2"

- Porcelain tile floor- same as Foyer
- Chest vanity with marble top, undermount sink, framed mirror and wall sconce lighting with shades
- Kohler flush
- Window
- Crown molding
- Modern round chandelier
- Exhaust fan

LAUNDRY ROOM 9'10" X 6'6"

- Porcelain tile floor
- Built-in mudroom cabinetry with bench and shoe cubbies
- Wall cabinets with clothes pole
- Enclosure with Samsung washer and dryer and quartz folding counter
- Brushed stainless steel hex-tile backsplash
- Ceiling light
- Access to Garage

GARAGE 32'0" X 21'3"

- Finished 3-car
- Automatic door openers
- Epoxy floor finish
- Two windows with plantation blinds
- Built-in storage shelving and wall cabinet
- Tesla charging station

UPPER LEVEL

HALL 11'3" X 9'0"

- Landing for staircase with banister overlooks to Foyer
- Hardwood flooring
- Wall panel molding

- Crown molding
- Recessed lighting
- Access to Bedroom Hall
- Access to Study
- Access to Primary Bedroom

PRIMARY BEDROOM 18'0" X 16'2"

- Hardwood flooring laid on diagonal
- Vaulted ceiling- sides paneled in wood
- Gas fireplace with modern mantel and quartz surround
- Four windows with custom Roman shades- 2 with drapery treatments
- Cove lighting
- Modern chandelier
- Samsung wall mounted TV

PRIMARY BATH 23'0" X 15'9"

- Vaulted ceiling with skylight
- Heated marble finish porcelain tile floor
- Two matching chest vanities each with quartz top, undermount sink, framed mirror, wall sconce lighting and mirrored medicine cabinet
- Freestanding oval soaking tub with handheld shower
- Glass-enclosed shower stall with marble finish porcelain tile walls and floor, rainshower, additional shower, wall niche and glass door
- Water closet with Kohler flush and window
- Two custom fitted walk-in closets with wall-to-wall carpeting
- Bay window at tub with arched center window and plantation shutters
- Modern round crystal chandelier
- Recessed lighting
- Exhaust fans

LIBRARY/STUDY 21'5" X 11'3"

- Partially vaulted with 2 skylights
- Hardwood flooring
- Custom built-in bookcases, base cabinets and wood paneled wall with Samsung wall mounted TV
- Walk-in bay window
- Glazed door to sundeck (18' X 15') with engineered wood decking, metal railings and outdoor speakers
- Modern chandelier
- Recessed lighting
- Rolling library ladder to open loft (11'3" X 9'4") with vinyl railing, walk-in access to attic and banister overlook to Foyer

BEDROOM HALL

- Hardwood flooring
- Octagon window
- Recessed lighting
- Linen closet

BEDROOM 2 24'2" X 17'2"

- Wall-to-wall carpeting
- Two windows with custom Roman shades
- Built-in window seat
- Custom fitted walk-in closet
- Additional custom fitted walk-in closet
- Recessed lighting
- Sliding barn door with frosted glass to private Bath

BATH

- Heated porcelain tile floor
- Porcelain tile vanity wall
- Cantilevered vanity with solid surface top and seamless sink, mirrored medicine cabinet and overhead lighting
- Full width porcelain tiled shower stall with wall niche, recessed light and glass door enclosure
- Kohler flush
- Window with custom shade
- Exhaust fan

BEDROOM 3 13'11" X 11'8"

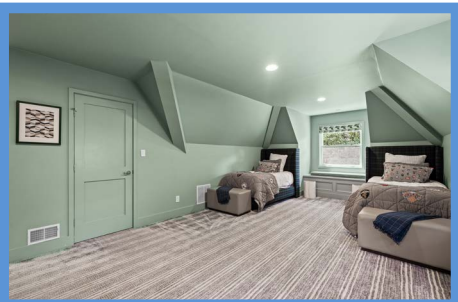
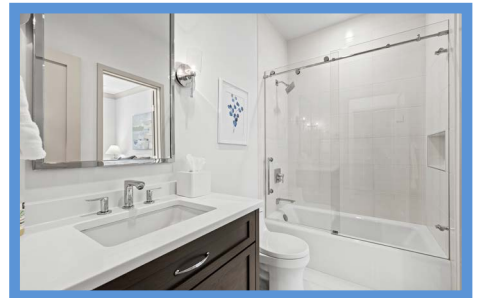
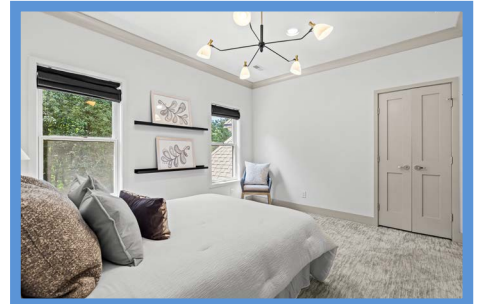
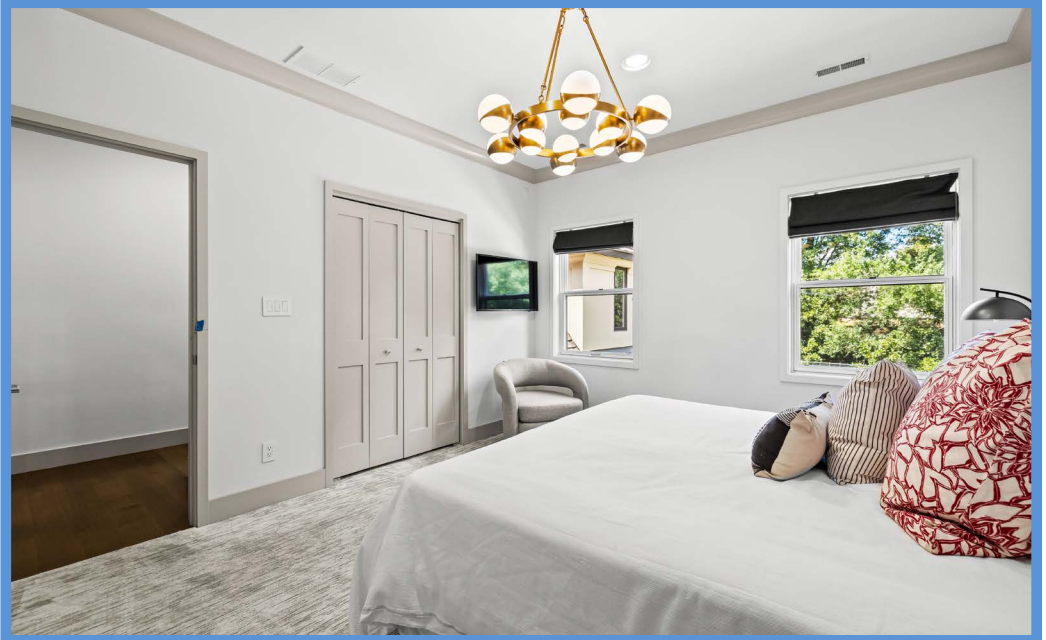
- Wall-to-wall carpeting
- Two windows with custom Roman shades
- Crown molding
- Custom fitted closet
- Modern chandelier
- Recessed lighting
- Wall mount shelving
- Access to Hall Bath

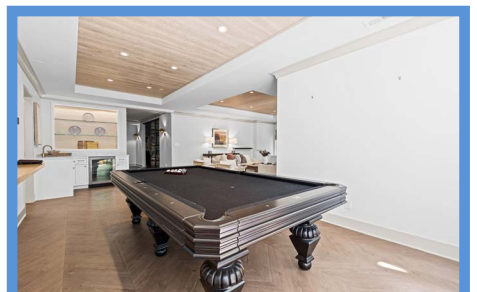
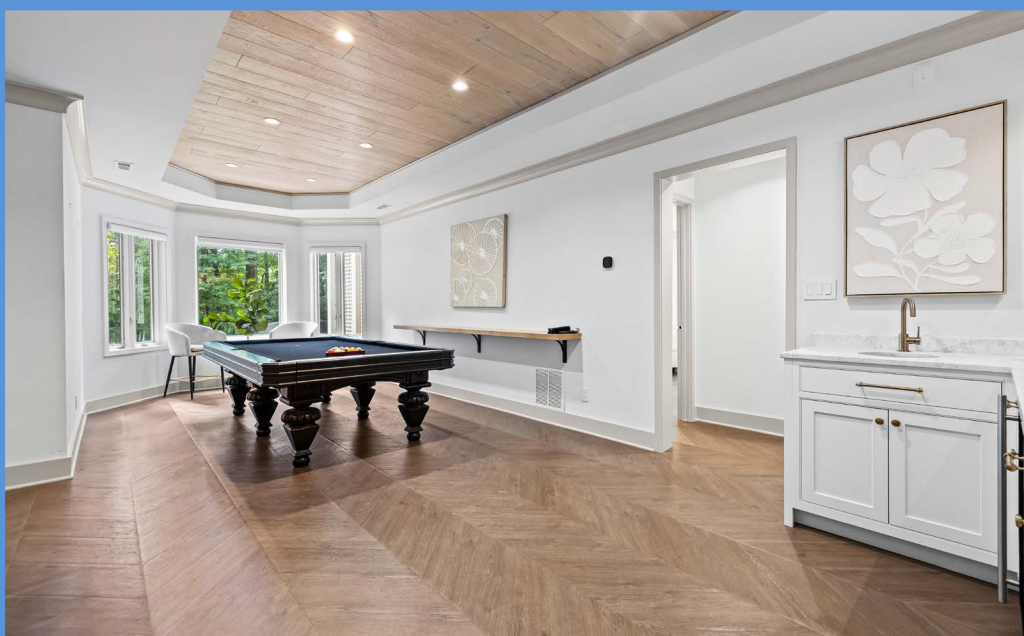
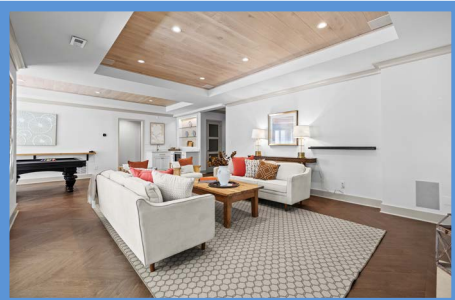
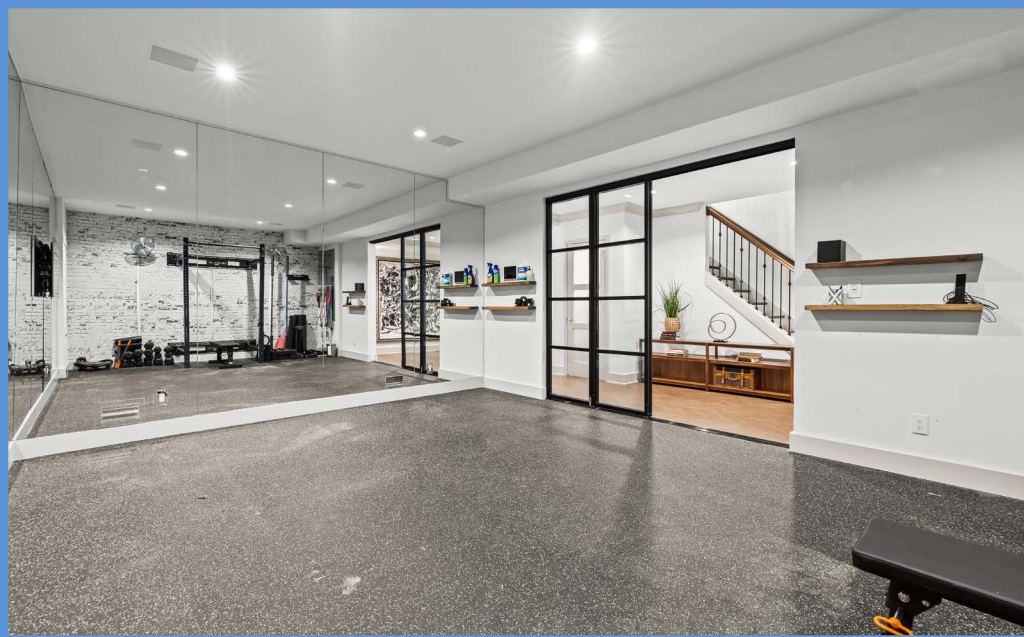
BEDROOM 4 13'11" X 11'10"

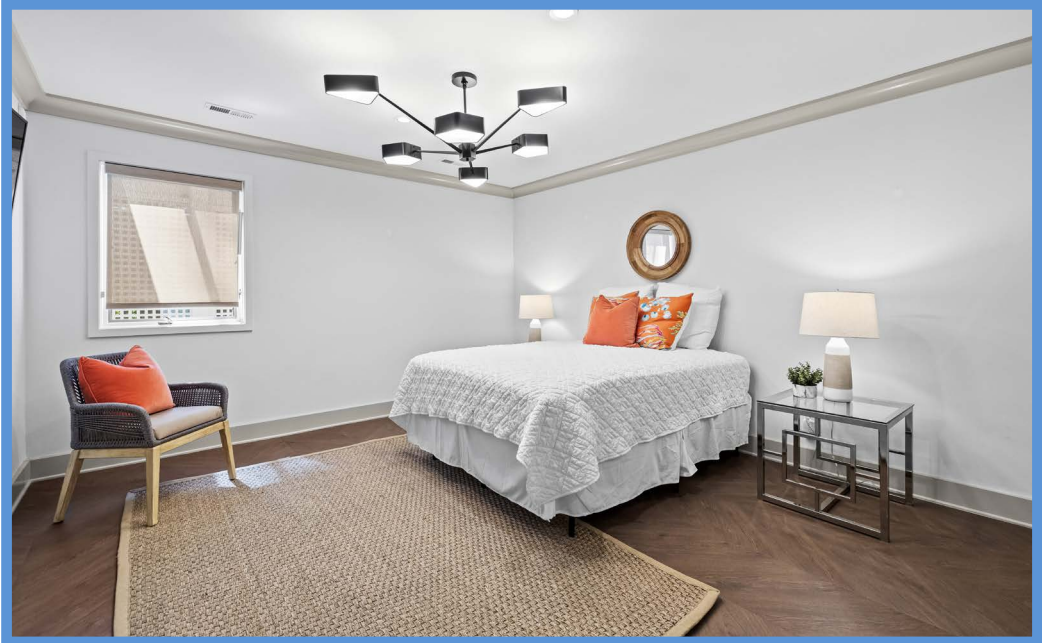
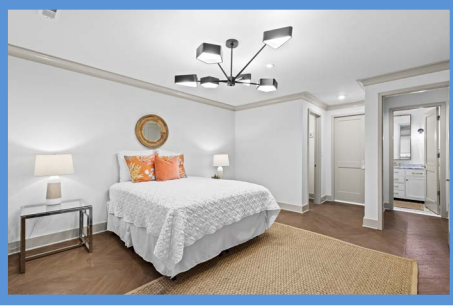
- Wall-to-wall carpeting
- Two windows with custom Roman shades
- Crown molding
- Custom fitted double closet
- Modern chandelier
- Two modern wall sconce lights
- Recessed lighting
- Samsung wall mounted TV

HALL BATH

- Heated porcelain tile floor
- Chest vanity with quartz top, undermount sink, framed mirror and overhead lighting
- Tub/shower combination with porcelain tile surround and glass doors
- Kohler flush
- Recessed lighting
- Exhaust fan







LOWER LEVEL

HALL 17'1" X 11'3"

- Open staircase access from Foyer
- Luxury vinyl plank flooring in chevron pattern
- Crown molding
- Recessed lighting
- Under-stair storage closet with whole-house audio cabinet
- Access to Utility Room
- Glass wall with sliding glass doors to Exercise Room
- Flows to Recreation Room

RECREATION ROOM

29'7" X 26'8"

- Luxury vinyl plank flooring in chevron pattern
- Two wood paneled tray ceilings
- Gas fireplace with cast stone mantel and hearth
- Wet bar with white recess-panel base cabinets, marble top, undermount prep sink, U-Line compact refrigerator and illuminated wall niche with wood wall backing and glass shelves
- Wall mounted wood shelf
- Walk-in bay window with custom shades
- Glazed door to covered patio
- Four windows with custom Roman shades
- Crown molding
- Recessed lighting
- Samsung wall mounted TV
- Built-in surround sound speakers
- Access to hall to Bedroom 5 and Bath

BEDROOM 5 19'5" X 13'1"

- Luxury vinyl plank flooring in chevron pattern
- Window with custom shade
- Crown molding
- Modern chandelier
- Samsung wall mounted TV
- Passage to Bath with custom fitted walk-in closet

BATH

- Dual access
- Ceramic tile floor
- Chest vanity with marble top, undermount sink, framed mirror and glass globe wall sconce lighting
- Full width shower stall with subway tile walls, wall niche and glass door enclosure
- Kohler flush
- Recessed lighting
- Exhaust fan

EXERCISE ROOM 21'0" X 14'5"

- Sliding glass doors from Hall
- Low-impact rubber flooring
- Two walls of plate glass mirrors
- Samsung wall mounted TV
- Recessed lighting
- Wall mount shelving
- Wall mount fan
- Concealed electric service panels

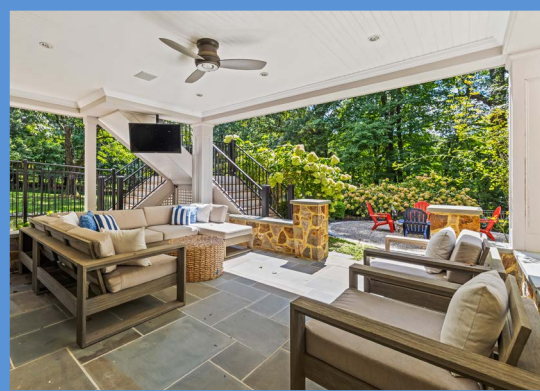
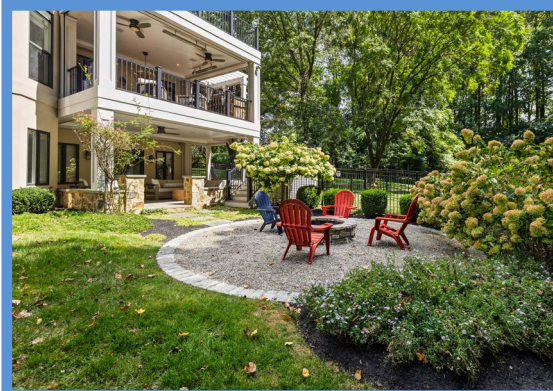
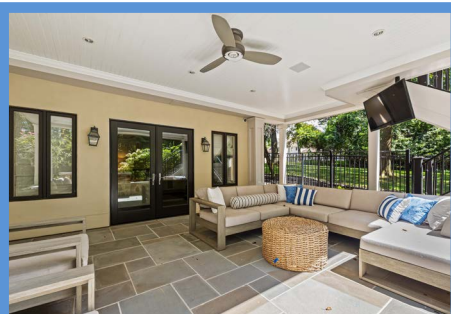
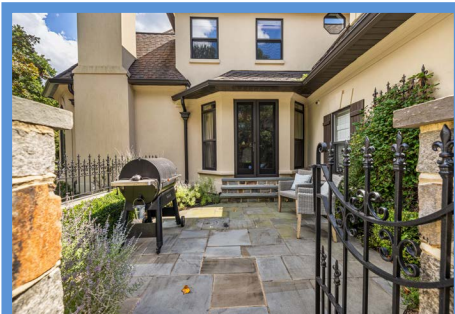
UTILITY ROOM 23'4" X 14'10"

- Unfinished
- Painted concrete floor
- Goodman HVAC unit with gas heat
- Carrier HVAC unit with gas heat
- Bradford White gas-fired water heater

EXTERIOR

- Stucco with stone accents
- Architectural asphalt shingle roof
- Bluestone walkway with circular stone medallion and bluestone steps to covered front porch with copper roof and wrought iron railings
- Fenced back yard and adjacent dog run with decorative black metal fencing
- Deer fencing along property perimeter
- Lower covered bluestone patio (18' X 15') accessed from Recreation Room with stone garden walls, beadboard ceiling with crown molding, built-in ceiling speakers, recessed lighting, ceiling fan and SunBrite ceiling mount TV
- Covered porch (23' X 15') accessed from Family Room and Kitchen with engineered wood decking, metal railings, stone cooking center with Wolf stainless steel gas grill, beadboard paneled tray ceiling with crown molding, retractable screens, ceiling mount Infratech heaters, crystal chandelier, recessed lighting, built-in ceiling speakers, 2 ceiling fans and attached pergola with gated staircases to yard and dog run
- Round gravel seating area with cobblestone border and round stone firepit
- Professionally landscaped and maintained

All information contained herein deemed reliable but not guaranteed by the Broker



*Hubble
Bisbee*

CHRISTIE'S
INTERNATIONAL REAL ESTATE

GREEN SPRING
STATION
410-321-1411

ANNAPOLIS
410-321-1833

